

LEGALS

INSPECTION PERIOD FOR THE PROPERTY TAX ASSESSMENT ROLL

The Owsley County real property tax roll will be opened for inspection from May 16 through May 30, 2025. Under the supervision of the property valuation administrator (PVA) or one of the deputies, any person may inspect the tax roll.

This is the January 1, 2025, assessment on which state, county, and school taxes for 2025 will be due about October 15, 2025.

The tax roll is in the office of the property valuation administrator in the county courthouse and may be inspected between the hours Mon-Fri 8:00am-4:00pm and Sat 8:00am-Noon. Any taxpayer desiring to appeal an assessment on real property made by the PVA must first request a conference with the PVA or a designated deputy. The conference may be held prior to or during the inspection period. Written documentation supporting your opinion of value will continue to be required. However, you will be instructed on the best method to submit your documentation after contacting our office regarding your request to have a conference. More specific instructions regarding how conferences will be held this year are available online at ky.gov and will be posted at the entrance to the PVA's office, located at: Owsley County Courthouse, Booneville, KY 41314.

Any taxpayer still aggrieved by an assessment on real property, after the conference with the PVA or designated deputy, may appeal to the county board of assessment appeals.

The appeal must be filed with the county clerk's office no later than one work day following the conclusion of the inspection period. Please contact the county clerk's office to receive instructions on the method the office is using to accept appeals this year and to obtain a form that can be used to file your appeal.

Any taxpayer failing to appeal to the county board of assessment appeals, or failing to appear before the board, either in person or by designated representative, will not be eligible to appeal directly to the Kentucky Board of Tax Appeals.

Appeals of personal property assessments shall not be made to the county board of assessment appeals. Personal property taxpayers shall be served notice under the provisions of KRS 132.450(4) and shall have the protest and appeal rights granted under the provisions of KRS 131.110.

The following steps should be taken when a taxpayer does not agree with the assessed value of personal property as determined by the property valuation administrator.

- (1) Taxpayer must list under protest (for certification) what they believe to be the fair cash value of their property.
- (2) Taxpayer must file a written protest directly with the Department of Revenue, Office of Property Valuation within 30 days from the date of the notice of assessment.
- (3) This protest must be in accordance with KRS 131.110.
- (4) The final decision of the Department of Revenue may be appealed to the Kentucky Board of Tax Appeals.

Michael Reynolds
Property Valuation Administrator - Owsley County

ADVERTISEMENT FOR BIDS PROJECT #23L-049 OWSLEY SPLASH PARK OWSLEY COUNTY SPLASH PARK BOONEVILLE, KENTUCKY

Sealed proposals for the following work will be received by Kentucky River Area Development District, on behalf of Owsley County Fiscal Court in Booneville, Owsley County, Kentucky at the Owsley County Courthouse – 20 Main Street Booneville, KY 41314, until 9:00 a.m. local time, Monday, May 26, 2025. Immediately following the scheduled closing time for the reception of bids, all proposals which have been submitted in accordance with the above conditions will be publicly opened and read aloud. The work to be bid is described as follows:

Project #23L-049

Grading, Install of splash pad water equipment, possible concrete pouring, infrastructure connection to existing water lines.

Sealed proposals for this project shall be clearly marked on the outside of the envelope as follows:

“Sealed Proposal for project #23L-049. Not to be opened until 9:00 a.m. local time, Monday, May 26, 2025.”

If forwarded by mail, the sealed envelope containing the proposal must be enclosed in another envelope and mailed to Kentucky River Area Development District, 941 N Main Street, Hazard, KY 41701, allowing sufficient time for such mailing to reach this address prior to the scheduled closing time for receipt of proposals.

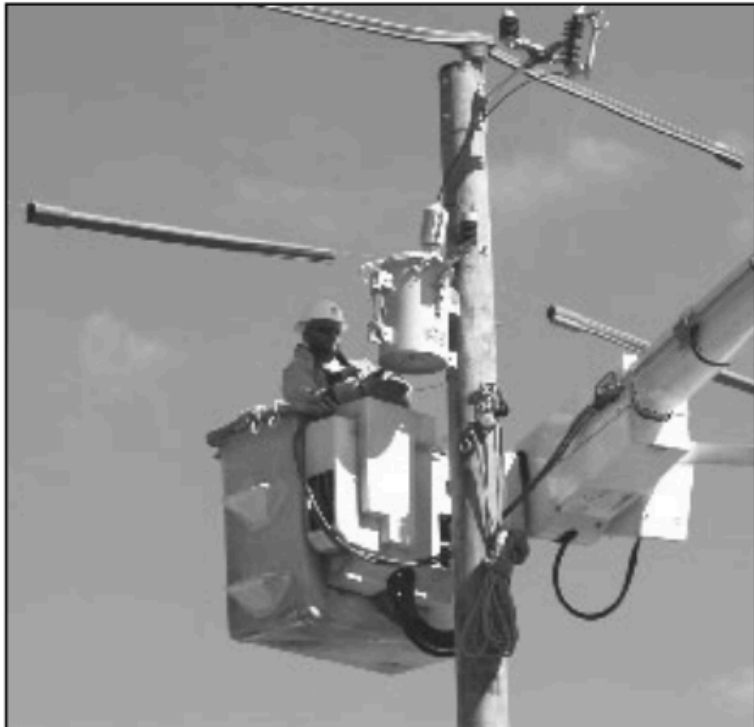
Bids shall be accompanied by a certified check or bid bond made payable to Owsley County Fiscal Court in an amount not less than the percent of the base bid indicated in Specification Section C-200, Instructions to Bidders, Bid Security. No bidder may withdraw his bid for a period of 90 days after the date bids are opened. He may, however, withdraw his bid at any time prior to the time and date scheduled for opening of same or any authorized postponement thereof. Any bid received after the time and date specified shall not be considered and will be returned unopened to the bidder.

The Owsley County Fiscal Court may consider informal any bid not prepared and submitted in accordance with the provisions of this advertisement and/or the Specifications and may waive any informalities or reject any and all bids.

Owsley County Fiscal Court
Zeke Little, Judge Executive

LINEMAN TRAINING CENTER Scholarship Opportunity

Jackson Energy Cooperative
is proud to offer one-full scholarship
to the
Lineman Training Center
at Somerset Community College



For more information
and to apply ONLINE -
visit Jackson Energy's website at:
jacksonenergy.com/scholarship-programs

**DEADLINE TO APPLY:
May 30, 2025**

JACKSON ENERGY

A Touchstone Energy®
Cooperative



jacksonenergy.com ♦ 1-800-262-7480

Use QR Code
to Search Kentucky
Public Notices or
go to
kypublicnotice.com



2004 Mini Cooper VIN# WMWRE33484TD89743 will be sold on 05/10/25
at the B Chaney Enterprises Towing and Recovery yard
36 Zeke Branch Rd Lerosé KY 41314 for towing and storage cost.

NOTICE TO CUSTOMERS OF KENTUCKY UTILITIES COMPANY

RECOVERY BY ENVIRONMENTAL SURCHARGE OF KENTUCKY UTILITIES COMPANY'S 2025 ENVIRONMENTAL COMPLIANCE PLAN

PLEASE TAKE NOTICE that in an April 30, 2025 Application, Kentucky Utilities Company ("KU") is seeking approval by the Kentucky Public Service Commission ("Commission") in Case No. 2025-00105, pursuant to Kentucky Revised Statute 278.183, of an amended compliance plan ("2025 Plan"). (Collectively, KU's Application and supporting testimony and exhibits are KU's "tariff filing.") If approved, KU will begin recovering capital costs associated with a new pollution control facility in the 2025 Plan under KU's existing Electric Rate Schedule ECR (also known as the Environmental Surcharge tariff) through an increase in the environmental surcharge on customers' bills beginning in December 2025.

KU filed an application with the Commission on February 28, 2025, in Case No. 2025-00045 seeking approval to construct a selective catalytic reduction system at the Ghent generating station to reduce nitrogen oxide (NOx) emissions, which are a precursor to ozone. In Case No. 2025-00105, KU is seeking an order approving the 2025 Plan to recover the costs of this new pollution control facility through its Environmental Surcharge tariff. This project will help ensure ongoing compliance with regulations issued under the federal Clean Air Act as amended, including the National Ambient Air Quality Standards for ozone.

The estimated total capital cost of this new pollution control facility is \$152.3 million. Additionally, KU is requesting recovery of future incremental capital and operation and maintenance expenses associated with this new pollution control facility. KU is also asking to recover the cost of publishing this customer notice through the Environmental Surcharge over 12 months and to have Environmental Surcharge recovery of future Commission-approved administrative expenses, including customer notice costs.

Beginning in December 2025, the initial bill impact for KU's Group 1 customers is estimated to be a 0.01% increase with a maximum increase of 0.81% in 2029. Group 1 includes Rate Schedules Residential Service (RS), Residential Time-of-Day Energy Service (RTODE), Residential Time-of-Day Demand Service (RTODD), Volunteer Fire Department Service (VFD), All Electric School (AES), and all Lighting Rates (i.e., LS, RLS, LE, and TE).

RS and VFD customers using 1,085 kWh/month could expect a monthly increase of \$0.01 up to \$1.09. RTODE customers using 1,043 kWh/month could expect a monthly increase of \$0.01 up to \$1.14. RTODD customers using 987 kWh/month could expect a monthly increase of \$0.02 up to \$1.80. AES customers using 25,620 kWh/month could expect a monthly increase of \$0.30 up to \$24.28. LS and RLS customers could expect a monthly increase of \$0.00 up to \$0.12. LE customers using 2,473 kWh/month could expect a monthly increase of \$0.02 up to \$1.59. TE customers using 147 kWh/month could expect a monthly increase of \$0.00 up to \$0.15.

Beginning in December 2025, the initial bill impact for KU's Group 2 customers is estimated to be a 0.01% increase with a maximum increase of 1.10% in 2029. Group 2 includes Rate Schedules General Service (GS), General Time-of-Day Energy Service (GTODE), General Time-of-Day Demand Service (GTODD), Power Service (PS), Time-of-Day Secondary Service (TODS), Time-of-Day Primary Service (TODP), Retail Transmission Service (RTS), Fluctuating Load Service (FLS), and Outdoor Sports Lighting Service (OSL).

GS customers using 1,657 kWh/month could expect a monthly increase of \$0.03 up to \$2.41. GTODD customers using 19,652 kWh/month could expect a monthly increase of \$0.31 up to \$25.26. PS-Secondary customers using 30,434 kWh/month could expect a monthly increase of \$0.39 up to \$32.35. PS-Primary customers using 35,028 kWh/month could expect a monthly increase of \$0.45 up to \$36.82. TODS customers using 189,538 kWh/month could expect a monthly increase of \$1.54 up to \$126.82. TODP customers using 1,242,574 kWh/month could expect a monthly increase of \$8.25 up to \$678.42. RTS customers using 7,387,224 kWh/month could expect a monthly increase of \$38.91 up to \$3,199.31. FLS-Transmission customers using 44,229,667 kWh/month could expect a monthly increase of \$237.46 up to \$19,525.53. OSL-Secondary customers using 4,627 kWh/month could expect a monthly increase of \$0.17 up to \$13.87.

The Application described in this Notice is proposed by KU, but the Commission may issue an order resulting in an environmental surcharge for customers other than the environmental surcharge described in this Notice.

Comments regarding KU's 2025 Plan and Application may be submitted to the Commission through its website or by mail to the Public Service Commission, Post Office Box 615, Frankfort, Kentucky 40602.

Any person may submit a timely written request for intervention to the Public Service Commission, Post Office Box 615, Frankfort, Kentucky 40602, establishing the grounds for the request including the status and interest of the party. If the Commission does not receive a written request for intervention within thirty (30) days of the initial publication of this Notice, the Commission may take final action on the Application.

Any person may examine KU's tariff filing at the Commission's offices located at 211 Sower Boulevard, Frankfort, Kentucky, Monday through Friday, 8:00 a.m. to 4:30 p.m., or through the Commission's website at <http://psc.ky.gov> or KU's website (<http://www.lge-ku.com>) after KU makes its tariff filing on April 30, 2025. KU has requested a deviation from the requirement to make the tariff filing available at its office at One Quality Street, Lexington, Kentucky 40507. If the Commission denies that request, KU will make the tariff filing available at its office upon request by any person.