

ACLU dismisses lawsuit challenging state's near-total abortion ban

BY MARK MAYNARD
KENTUCKY TODAY

LOUISVILLE – A lawsuit attempting to overturn the state's near-total abortion ban was withdrawn Friday, May 30, the American Civil Liberties Union of Kentucky said.

The plaintiff was a Louisville woman – referred to as Mary Poe – who was seven weeks pregnant when she sued the state in November that challenged Kentucky's law that banned abortion in June 2022 when the U.S. Supreme Court overturned Roe V. Wade.

In a news release, ACLU announced it had asked for the lawsuit to be voluntarily dismissed Friday without explanation.

“Today, attorneys dismissed a lawsuit challenging Kentucky’s two abortion

bans,” ACLU Executive Director Amber Duke said. “Decisions about health care are and should remain private, and we will not be providing additional details about the dismissal.”

The dismissal was filed in Jefferson County Circuit Court and said the “plaintiff voluntarily dismisses this action.”

Attorney General Russell Coleman called it a victory for pro-life advocates in Kentucky.

“Kentuckians can be proud that our pro-life values won the day today and innocent lives will continue to be saved as a result,” he said. “I'm grateful to our dedicated team who continues to uphold the law as passed by our General Assembly.”

Addia Wuchner, executive director of Kentucky Right to Life, called it a great

moment.

"The dropping of this case is a testament to the will of the people of Kentucky, the prayers at work of pro-life advocates, the courage of our elected officials - and the steadfast commitment of Attorney General Russell Coleman and his team in defending our Kentucky laws and the dignity of every human life. This is a moment for prayerful gratitude and renewed strength."

Wuchner said in her statement the "legal victory ensures that Kentucky's strong pro-life protections remain intact continuing to save lives and uphold the fundamental truth that every human life is sacred."

Abortion has been illegal in Kentucky for the last three years under a six-week ban on abortion and a trigger law that immediately banned

abortion in nearly all cases when the federal abortion protections were overturned.

The laws prohibit any pregnancy from being terminated if there is still detectable fetal cardiac activity, except in cases where the life of the pregnant person is immediately in danger.

There are no exceptions for rape or fetal anomalies incompatible with life.

Earlier this year, the General Assembly passed a bill into law to clarify the medical exceptions legally allowed under Kentucky's ban. The clarification instructs health care providers to “make reasonable medical efforts under the circumstances to preserve both the life of the mother and the life of the unborn child.”

It specifies that doctors can intervene to remove molar and ectopic preg-

nancies, manage miscarriages, treat sepsis and hemorrhage and more.

Rep. Nancy Tate, R-Brandenburg, said in March when the measure was being debated that “under no circumstances is this language expected or intended to be prescriptive.”

“Within this language, it says that ‘reasonable medical judgment’ means the range of conclusions or recommendations that licensed medical practitioners with similar sufficient training and experience may communicate to a patient based upon current and available medical evidence. There’s also a clause within this language that says that in cases of emergencies, that the reasonable medical judgment can be used.”

With the dismissal of the latest lawsuit, there is no

active legal action challenging the constitutionality of Kentucky’s abortion bans.

Coleman said Kentucky was represented by Environmental Law Executive Director Aaron Silletto, Deputy Directory Lindsey Keiser and Assistant Attorney General Larisa Plecha.

The ACLU on Friday said it would continue its fight.

“People have the right to control their own bodies without government interference, and we will never stop fighting to restore abortion access in Kentucky,” Duke said. “We are strategizing our next steps in this fight.

“In the meantime, our work to address the commonwealth’s maternal mortality rates and lack of widespread paid leave coverage will continue as long as Kentucky remains a forced-birth state.”

LAWSON

FROM PAGE A1

over the past few years. The jury heard portions of those statements earlier in the trial.

On Friday, Lawson said he didn't take Houck serious, even though Lawson recommended another man for the job and even mentioned Houck's desire to the man. Prosecutors said Lawson very much took Houck serious, and some of his actions around the time of Rogers' disappearance show it.

Assistant prosecutor Jim Lesousky took Lawson to task during his cross-examination about several of his conflicting statements and Lawson's knowledge of the plot.

Lawson acknowledged he helped his son, Joey, pick up Rogers' car sometime in the afternoon of July 3. Lawson claimed

he then went to a farm he referred to as Thompson Ridge, and later saw Joey arrive driving Rogers' car. Lawson said he told his son to get off the property, because he said the farm was what he would describe as a “chop shop.”

Prosecutors have said part of the plot to murder Rogers was taking her car and making it disappear, to “create the illusion” that she had run out on her family and children. Lawson said he had no idea why Houck had asked him and Joey to move the car, and he didn't ask.

“He just said to move the car. He didn't say why,” Lawson said.

Lesousky said Lawson was nervous about the car because he knew the car was a key part of the plot.

“A crime was going on and you were in the middle of it,” Lesousky said.

Lawson has also admitted to later that evening picking Joey up on the side of the

Bluegrass Parkway after Rogers' car had broken down with a flat tire. Lawson admitted he reached into the car and adjusted the seat forward to make it appear that Rogers, who was much shorter than Joey, had been driving it when it was abandoned.

“You did this to create an illusion this lady was the last one driving the car,” Lawson said. “Why would you want to create this illusion,” if he did not know the larger plot was to have it appear as if she had taken off on her own, he asked.

On several instances when he was pressed for answers or details, Lawson brought up his history of alcohol abuse.

“I was a raging alcoholic,” he said.

Lawson was in the witness stand for about 95 minutes, and was the last witness to testify. Closing arguments ended right around 12:28 p.m. and the jury convened for its deliberations.

State auditor releases Marion sheriff tax audit

STAFF REPORT

FRANKFORT – Earlier this week State Auditor Allison Ball released the audit of the sheriff's settlement – 2023 taxes for Marion County Sheriff Jimmy Clements. State law requires the auditor to annually audit the accounts of each county sheriff. In compliance with this law, the auditor issues two sheriff's reports each year: one reporting on the audit of the sheriff's tax account, and the other reporting on the audit of the fee account used to operate the office.

The auditor's report stated, “the sheriff's financial statement fairly presents the taxes charged, credited, and paid for the period September 1, 2023 through August 31, 2024 in conformity with the regulatory basis of accounting.”

The auditor's office found only one area of concern. The finding: “The sheriff's office

does not have segregation of duties over receipts and disbursements.”

The reported states, “the sheriff's bookkeeper collects payments from customers, prepares deposits, prepares daily collection printouts, and posts to the receipts' ledger. In addition, the bookkeeper prepares the monthly tax reports, reconciles monthly tax reports to receipts and disbursements, prepares and signs checks, and prepares the monthly bank reconciliations. The bookkeeper also prepares franchise bills based on the county clerk's assessment, without supervisory review.

“According to the sheriff, a lack of segregation of duties existed because a limited number of employees were available to properly segregate job duties. A lack of segregation of duties increases the risk of misappropriation of

assets, errors, and inaccurate financial reporting to external agencies such as the taxing districts.”

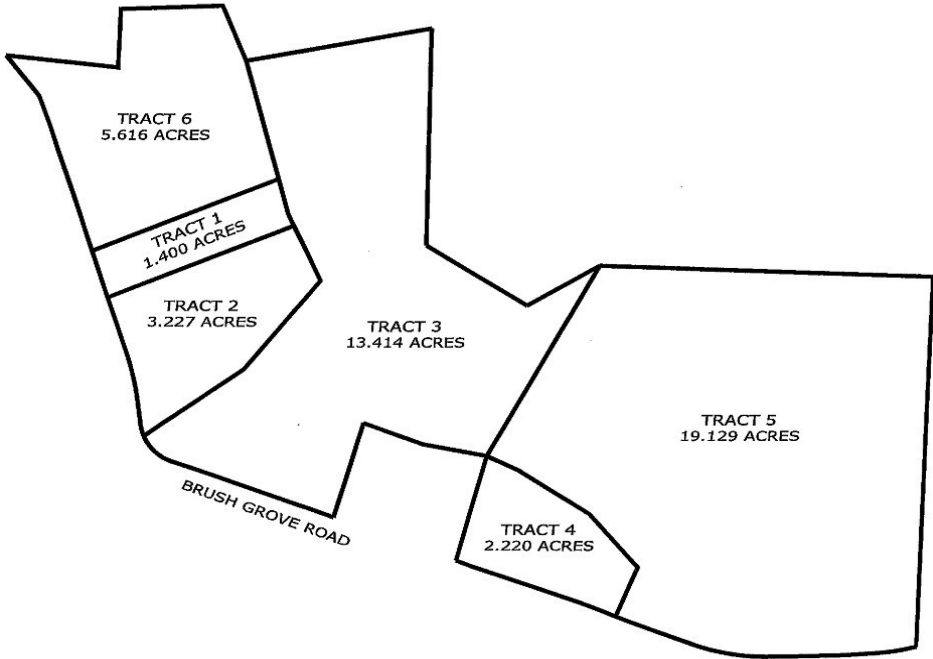
The auditor's office recommends the sheriff's office separate duties over receipts and disbursements. If these duties cannot be separated due to limited staff or limited budget, then strong oversight over those areas should occur and involve the sheriff or an employee not currently performing any of those functions. The individual providing this oversight should initial source documents as evidence of review.

The sheriff's responsibilities include collecting property taxes, providing law enforcement, and performing services for the county fiscal court and courts of justice. The sheriff's office is funded through statutory commissions and fees collected in conjunction with these duties.

ABSOLUTE AUCTION SAT. JUNE 14TH, 10 AM

LAURA JANE JENKINS ESTATE 38 ACRE FARM IN TRACTS • BARN & LAKE

Location:
4698 BRUSH GROVE RD., WILLISBURG, KY



REAL ESTATE SELLS AT 10:00 A.M.

Reason For Sale: In order to settle the Estate, **Bishop Realty & Auction, LLC** has been commissioned by **Tammy Jenkins Wilhoite, Executrix**, to sell at **ABSOLUTE AUCTION** this nice farm under the terms and conditions as stated. (**E. Gregory Goatley, Attorney for the Estate**)

REAL ESTATE: Selling a nice 38 acre farm in the Brush Grove community of Washington County Ky. The farm has some excellent home sites, a 24 x 36 metal barn with double doors, a nice lake, good pasture land and about 10 acres of crop land. **TRACT #1- 1.40 Acres** with one of the best Home sites in the county. Blacktop frontage. **TRACT #2- 3.22 Acres** with another great Home site and blacktop frontage. **Tract #3- 13.41 Acres.** If you are looking for a mini farm, we have it for you here. A great homesite with a 24x36 metal clad barn, a nice lake and a mixture of woods and cleared land with good blacktop frontage. Lots of wildlife and your own private fishing hole. **TRACT #4- 2.22 Acres** with blacktop frontage. Here is another great home site in a nice rural setting. **TRACT #5- 19.12 Acres.** Here is a chance to buy some fertile Washington County crop land. About 10 acres of crop land and the balance in woods and grass. Beautiful Home site with lots of blacktop frontage. This beautiful property is well located with easy access to surrounding areas including Springfield, Bardstown and Lexington. This is a great opportunity to purchase a small farm with a place for your new home, a lake to fish in and wildlife everywhere. **SOLD AT ABSOLUTE AUCTION** where the final bid sets the price. There will be a deed restriction on all tracts stating that no single wide mobile homes can be placed on any of the tracts.

TERMS: 20% Down payment the day of sale and the balance with deed and possession on or before July 14th, 2025. Property taxes for 2025 paid by the sellers. A 10% Buyers Premium will be added to the final bid of everything sold to determine the total sales price.

“ALL ANNOUNCEMENTS MADE DAY OF SALE TAKE PRECEDENCE OVER ANY ADVERTISEMENT.”

BISHOP
REALTY & AUCTION LLC.
www.BishSells.com



502-252-5528

ABSOLUTE AUCTION SAT. JUNE 7TH, 10 AM

MR. MARCUS DWIGHT SIMPSON ESTATE HOUSE & 98 ACRE FARM 9 TRACTS BARN-GARAGE-STORAGE BLDG. • TRACTOR & EQUIPMENT FURNITURE & PERSONAL PROPERTY

Location:
534 LONG LICK LANE, SPRINGFIELD, KY 40069

Directions: From Springfield Ky take Mackville Road (Hwy 152) about 10 miles to Mayes Creek Road. Turn left on Mayes Creek road and go about 1 mile to Long Lick Lane. Turn right on Long Lick lane and go about 7/10 miles to the property on your left. From Exit 42 (Hwy 555) on Bluegrass Parkway go Southwest about 9 miles to Mayes Creek Road on the Left. Turn left on Mayes Creek Road and go about 5 2/10 miles to Long Lick Lane. Turn left and go about 7/10 miles to the property on your left. Auction signs posted.

REAL ESTATE SELLS AT 10:00 A.M.

Reason For Sale: In order to settle the Estate of Mr. Simpson (Mr. Greg Goatley, Attorney), Bishop Realty & Auction, LLC has been commissioned by the Co-Executors (Gregory Allen Simpson & Karen Denise Curtsinger) to sell at **ABSOLUTE AUCTION** the following property under the terms and conditions as stated.

REAL ESTATE: Selling a 98 Acre farm with a 28x52, 1999 Fall Creek Home. **TRACT #1 - 13.84 Acres** with a mixture of excellent pasture land and woods plus a tremendous amount of road frontage on Long Lick Lane. **TRACT #2- 1.27 Acres** of good grass land fronting on both Long Lick Lane & Turner Lane. Nice Home site. **TRACT #3- 7.02 Acres** with some woods, a small pond and lots of good grass for pasture. Beautiful Home site fronting on Turner Lane. **TRACT #4- 5.45 Acres** with frontage on Turner Lane. Mostly clear and a great place for a home. **TRACT #5- 7.60 Acres.** This nice tract is a mixture of woodland and pasture land with 2 multi-purpose sheds and fronts on both Turner Lane and Long Lick Lane. **TRACT #6- 11.01 Acres** with frontage on Long Lick Lane, scattered woods and loaded with grass for the farm animals. **TRACT #7- 18.74 Acres** of mostly pasture and crop land. This Tract fronts on Long Lick Lane and has a fantastic view of the surrounding area. **TRACT #8- 29.65 Acres** with a 1999 Fall Creek Home having 3 bedrooms, spacious living room with cathedral ceiling, kitchen-dining room combo, laundry/mud room off the side porch and 2 full baths. The home has a covered front porch plus a covered wrap-around porch on the back and side of the house. The home is on a concrete block foundation and sits on a spacious fenced in yard with plenty of room for a garden spot. There is also a 12x16 metal storage building, 2 bay shop/garage and a large tobacco barn. City water at the house and barn and pond. Mature shade and beautiful views of the rolling country side. Lots of pasture & hay ground with an excellent stand of grass. Lots of good ridge land with frontage on Long Lick Lane. **TRACT #9- 1.02 Acres** situated along the creek with lots of frontage on Turner Lane. This farm has been in the family for many years and farms like this are hard to find. If you are looking for a working cattle farm, a smaller tract of land or just a place for a new home, we have it all right here. The farm will be offered as a whole and in tracts and deeded in the manner bringing the most total dollars. **SOLD AT ABSOLUTE AUCTION WHERE THE FINAL BID SETS THE PRICE.**

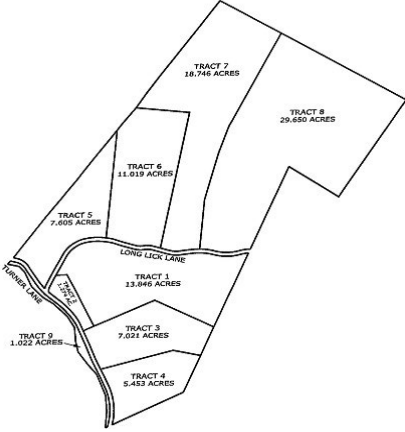
TRACTOR, EQUIPMENT& TOOLS: 1976 135 Massey Ferguson Tractor that was recently overhauled with a new diesel motor, power steering and injector pump, seat and more, Cub cadet LT 1046 riding mower, Vicor 7ft. disc mower, rotary hoe, (2) 3 pt. hay forks, 6 ft. Agri-Cutter 3 pt. bushhog, 6 ft. M.F. 3 pt lift disc, (2) Ford 601 sickle mowers, Dearborn 10-152 2 gang plow,(2) 3pt. hitch scaper buckets, 5 ft. 3 pt hitch bushhog, N.H. 256 dolly wheel ake, Schultz Spreadmaster manure spreader PTO driven, Ground driven manure spreader, 2 basket hay tedder, hay elevator, boom pole, metal drag, truck box for storage, catch chute, water troughs, feed troughs, mineral tub, car ramps, steel posts, tobacco sticks, echo & stihl blowers, echo weed eater, hedge trimmers, 10x10 dog kennel, lots of gates, pressure washer, (2) electric fence boxes, air compressor, air tank, funnels, jack stands, wrenches, tools, hammers, shovels, cattle oiler, pipe wrenches, bolts & nuts, nails, tool boxes, chain saw sharpener, bench vise, bench grinder, jumper cables, chisel-punch set, (2) echo chainsaws, 460 Husqvarna chain saw, igloo dog house, 10 ft. step ladder, come alongs, bolt cutters, top links, barn jack, chains, extension cords and more.

FURNITURE & HOUSEHOLD ITEMS: Libby Glass Car Jug, card table, carnival glass, bird figurines, laundry basket, Filter Queen Air Purifier and Sweeper, Kenmore sewing machine, canister set, Small kitchen appliances, old Horse & Carriage clock, Antique cast iron Turtle Spittoon, microwave, G.E. refrigerator and Electric range, G.E. Washer, Hotpoint Dryer, Upright deep freezer, Couch & chair, lamps, dresser with mirror, shower seat, granite ware, blue jars, (2) flat irons, Crocks, bowls & jugs, butter churn, pitcher & bowl, lots of glassware, set of dishes, afghans, candle holders, pictures, Oak dining room table with 6 chairs, extra leaf and hutch, Jazzy electric wheel chair with car carrier, jars of marbles, wheel chair, walkers, cane, rocker recliner, lift chair, recliner, straight chairs, tables, colored dishes, small wash board, step stool, umbrellas, Oak entertainment center, mug collection, tread mill, luggage, desk chair and mat, Roku 32" TV in the box, Phillips 50" TV in the box, clocks, (2) porch rockers, water hoses, and more.

TERMS: **Real Estate:** 20% down the day of sale and the balance with deed delivery and possession on or before July 7th, 2025. **Personal Property:** Cash or good check the day of sale. No Credit Cards.

There will be a 10% Buyers Premium added to the final bid of everything sold to determine the total sales price. A 6% Ky Sales Tax will apply to all personal property unless you provide a valid Resale Certificate Number.

“ALL ANNOUNCEMENTS MADE DAY OF SALE TAKE PRECEDENCE OVER ANY ADVERTISEMENT.”



BISHOP
REALTY & AUCTION LLC.
www.BishSells.com



502-252-5528